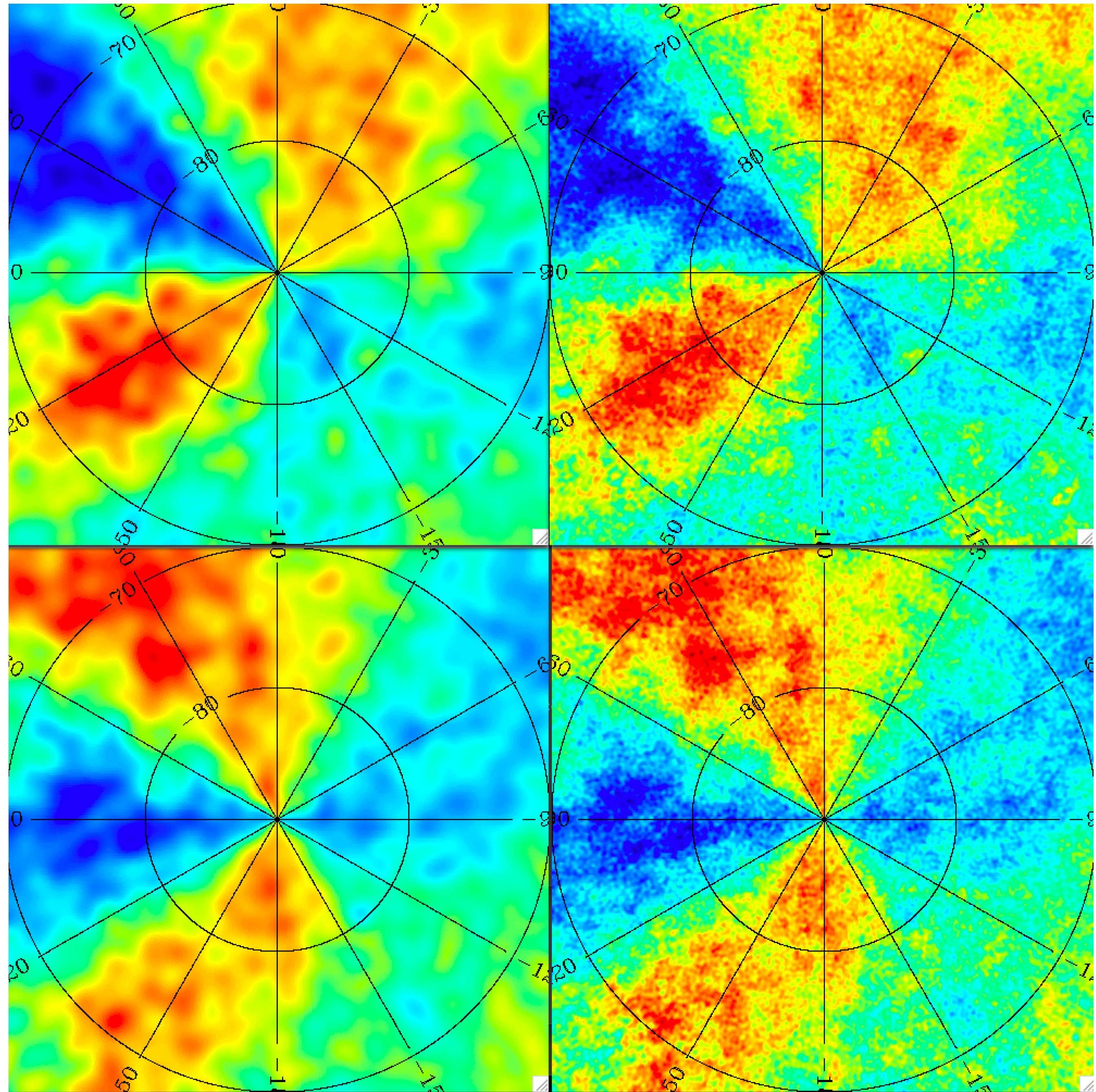
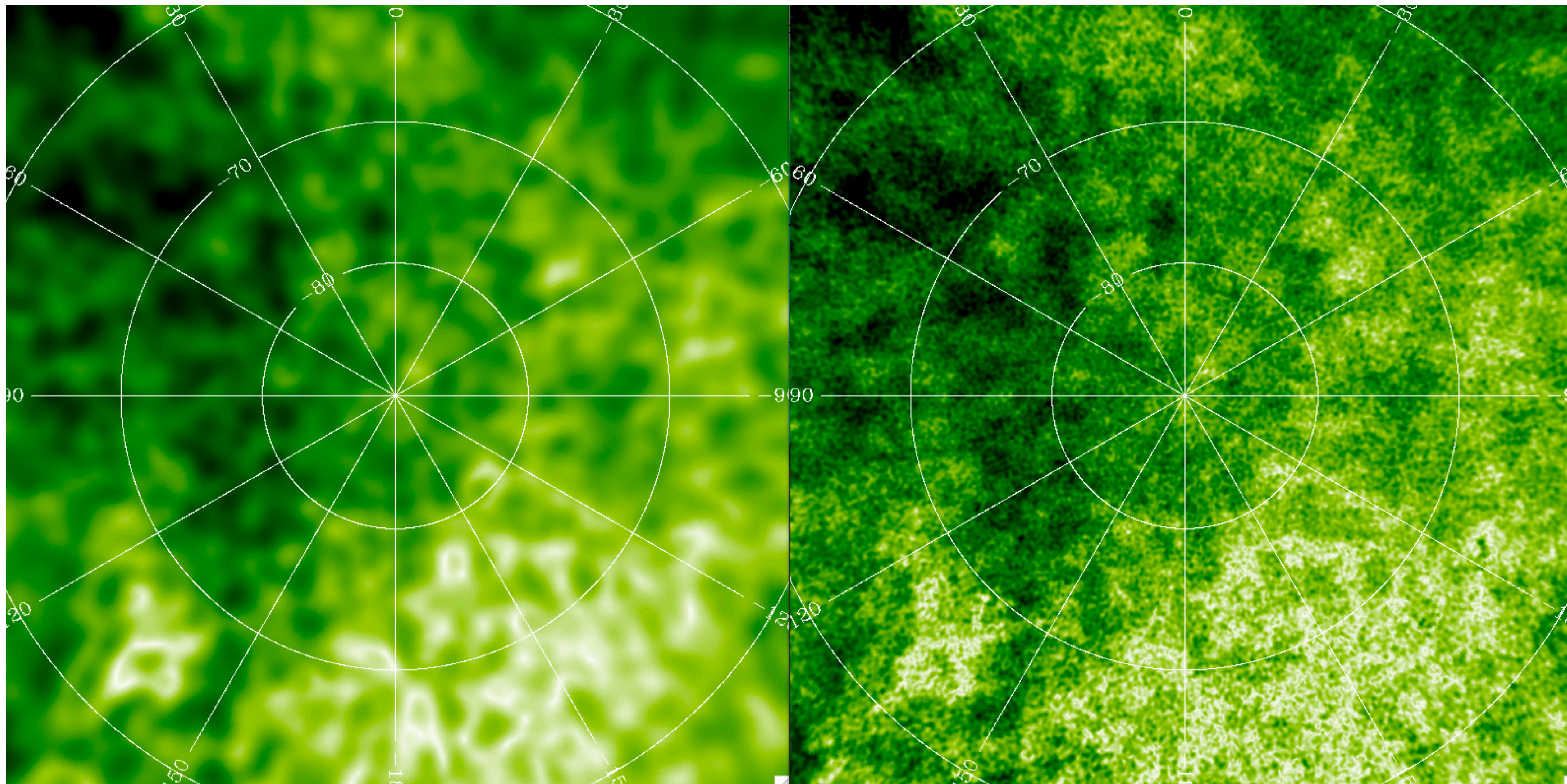


Kris Update

June 28, 2021

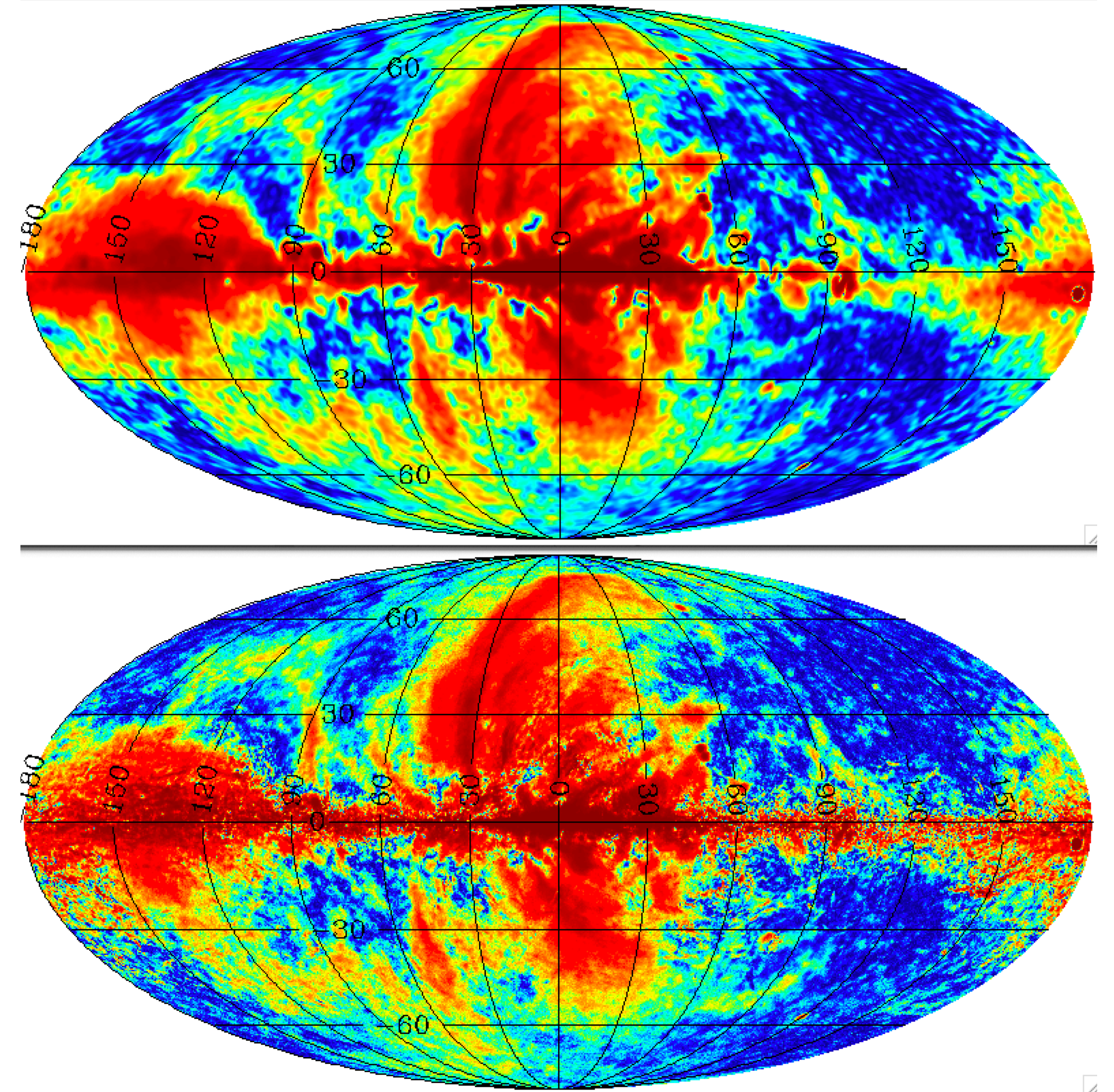
South Galactic Pole region for Q
(upper), and U (lower panels), and
K-band (left), high-res added (right
panels), now plotted on linear
scale ± 30 mK; some better
visibility of what's done





Same as previous for polarization amplitude around SGP,
scale linear $[0,30]\mu\text{K}$

Mollweide maps of polarization amplitude for – top: K-band, FWHM=2deg; bottom: same with high-res power added; this is plotted in histogram equalized color; it is not immediately impressive that small scales are there outside the galactic plane. See next slides.



Half-sky pseudospectra EE/BB for this high-res padded map; this shows that there is power attenuation at high- l corresponding to FWHM=14 arcmin; this can be played with to bring that power back; it is important to note that noise dominates the raw K-band maps already below $l \sim 100$ – that's why I low-pass filtered them to FWHM=2 deg to suppress that in the maps/spectra I work with.

