
Bernard Sadoulet
Dept. of Physics /LBNL UC Berkeley
UC Institute for Nuclear and Particle
Astrophysics and Cosmology (INPAC)

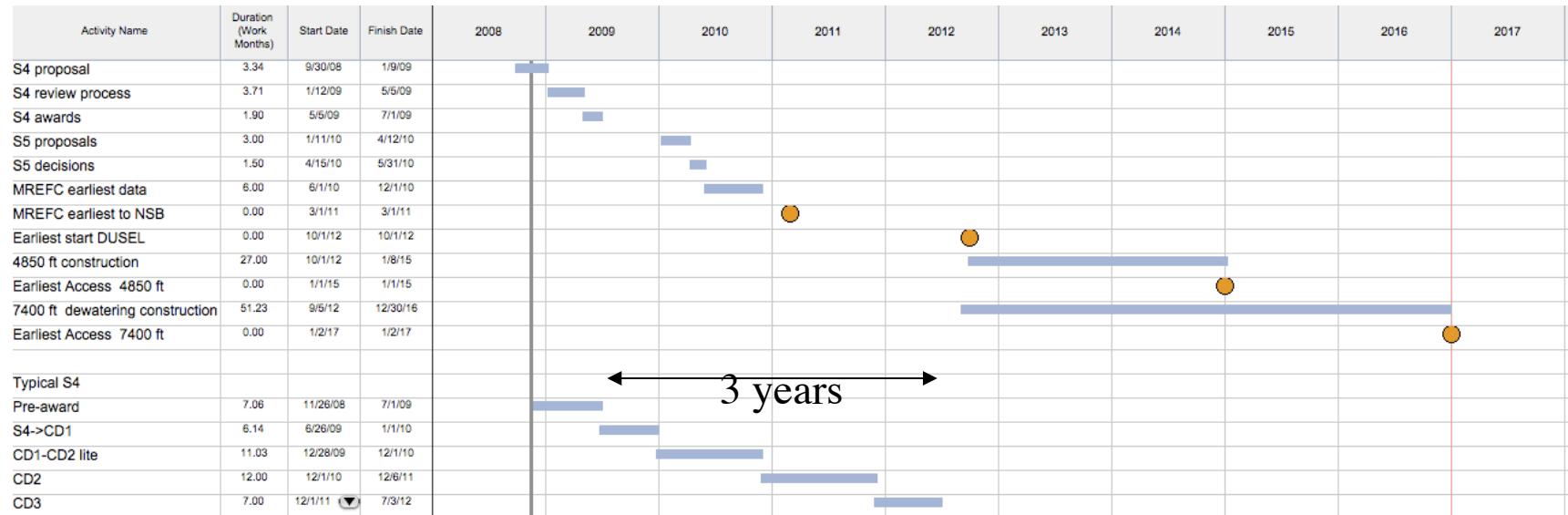
A few remarks about the process

My personal view!

Time scale
Co-PI limit
Support from S3 and LBNL

Time Scale

My personal impression: Earliest possibility Not official!



Of course many possibilities for delay

e.g. Long base line timing and interaction with DOE culture
Stricter NSB requirements
Budgetary pressures

Other on ramps?

In the long run, $\approx 10\%$ of initial budget likely to be available each year
Running of the facility
NSF contribution to new experiments
Short run: likely to be a lot of pressure

S4

Co-PI rule

Conversation with Jon Kotcher

worry about people spreading them too thin

Probably not willing to change limit

But "co-PI" is defined as appearing on cover page.

a subcontract can be made to a person who is not a co-PI

Help from LBNL engineering

Distinguish between

- Engineering Resource Group that we are trying to formalize (DEDC)

Pre-S4

- WBS template
- Cost, risk, contingency machinery
- Interface
 - At least on website. May be phone meeting/in person meeting?

Post S4

- discussion forum, harmonization
- foster collaborations e.g. water shield
- work on interface
- The letter from S3
 - You need to contact S3 and discuss in detail with the
 - Subcontracting to LBNL engineering group