

# UMN Test Setup

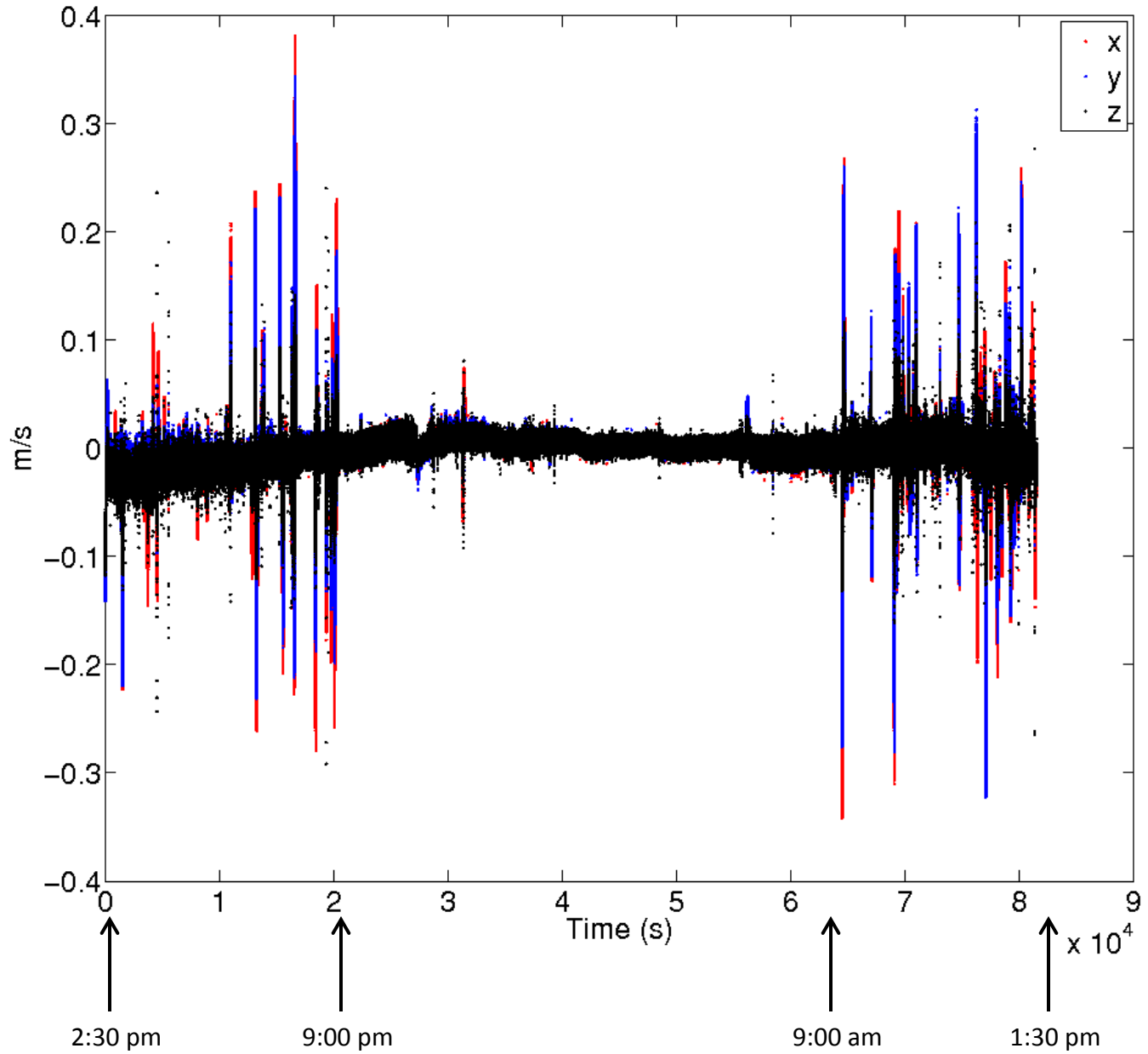
Tanner Prestegard

12/5/2013

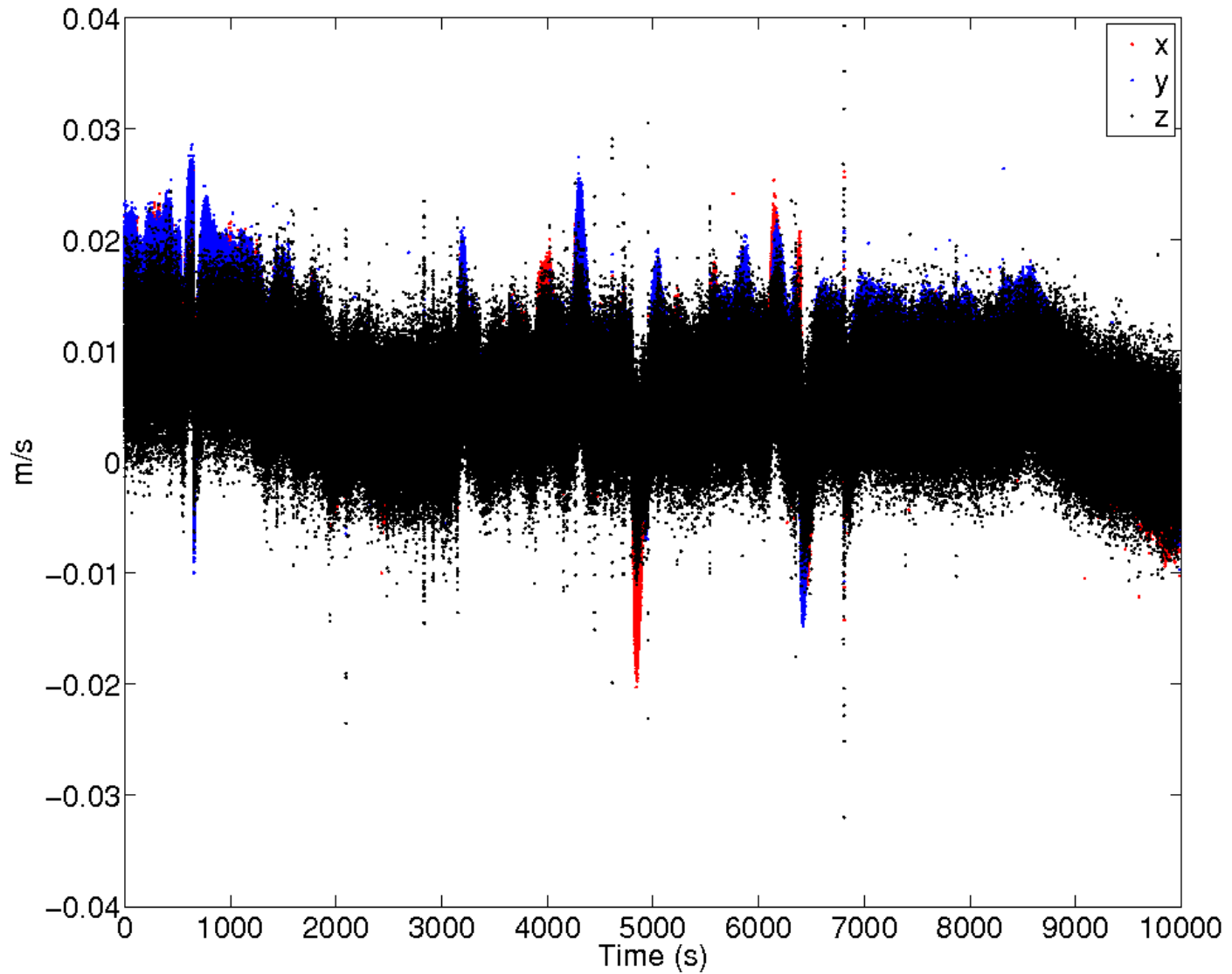
# Description

- Replicated old Homestake data acquisition setup in basement lab at UMN (minus signal amplifier).
- Fixed mass centering issue (broken wire in seismometer cable).
- Collected data for about a day:
  - 2:30 pm on 11/26/2013 – 1:30pm on 11/27/2013

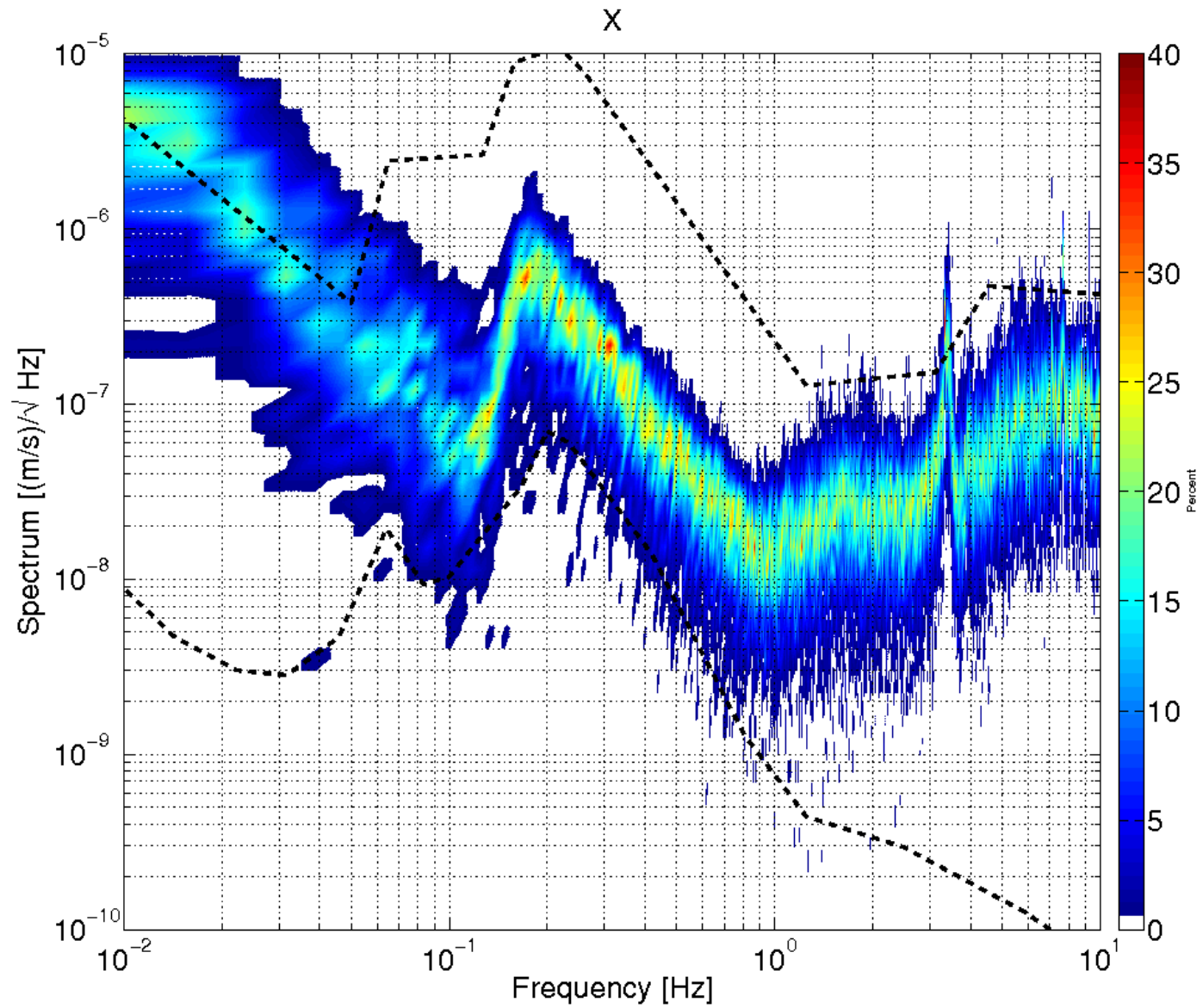
# Full Dataset



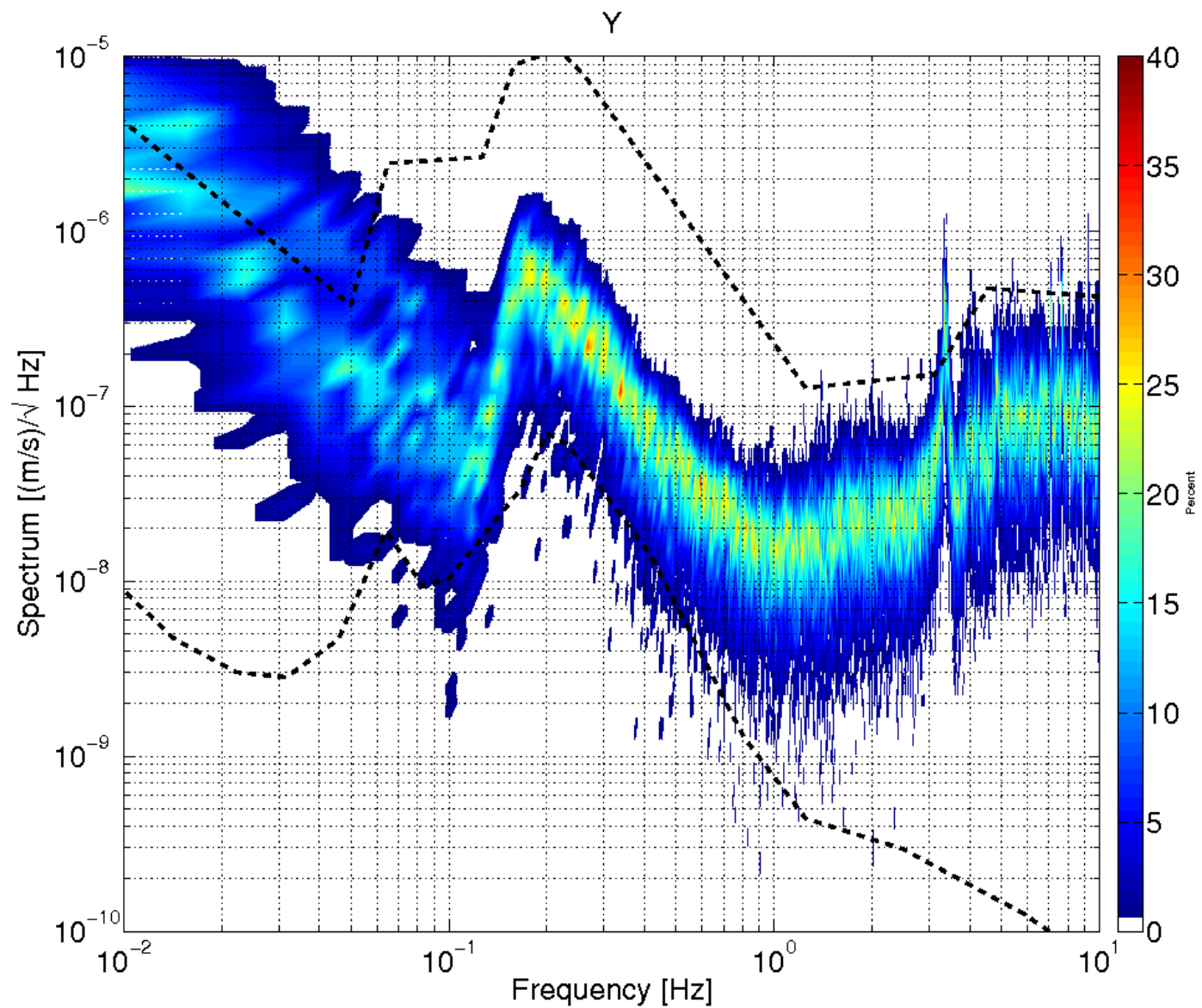
11:30 pm – 2:17 am



# 11:30 pm – 2:17 am: X channel



# 11:30 pm – 2:17 am: Y channel



# 11:30 pm – 2:17 am: Z channel

