

Comparison of Rayleigh Wave Recoveries of Differing Observation Lengths

Levi Walls

21, September 2015

Independent Parameters

- Detectors used:
 - 300, 800, A4100, C4100, D4100, B4850, C4850, D4850, ROSS, YATES
- Channels used:
 - HHE, HHN, HHZ
- Recovery bin size: 6°
- ϵ : 0.7

Parameters Continued

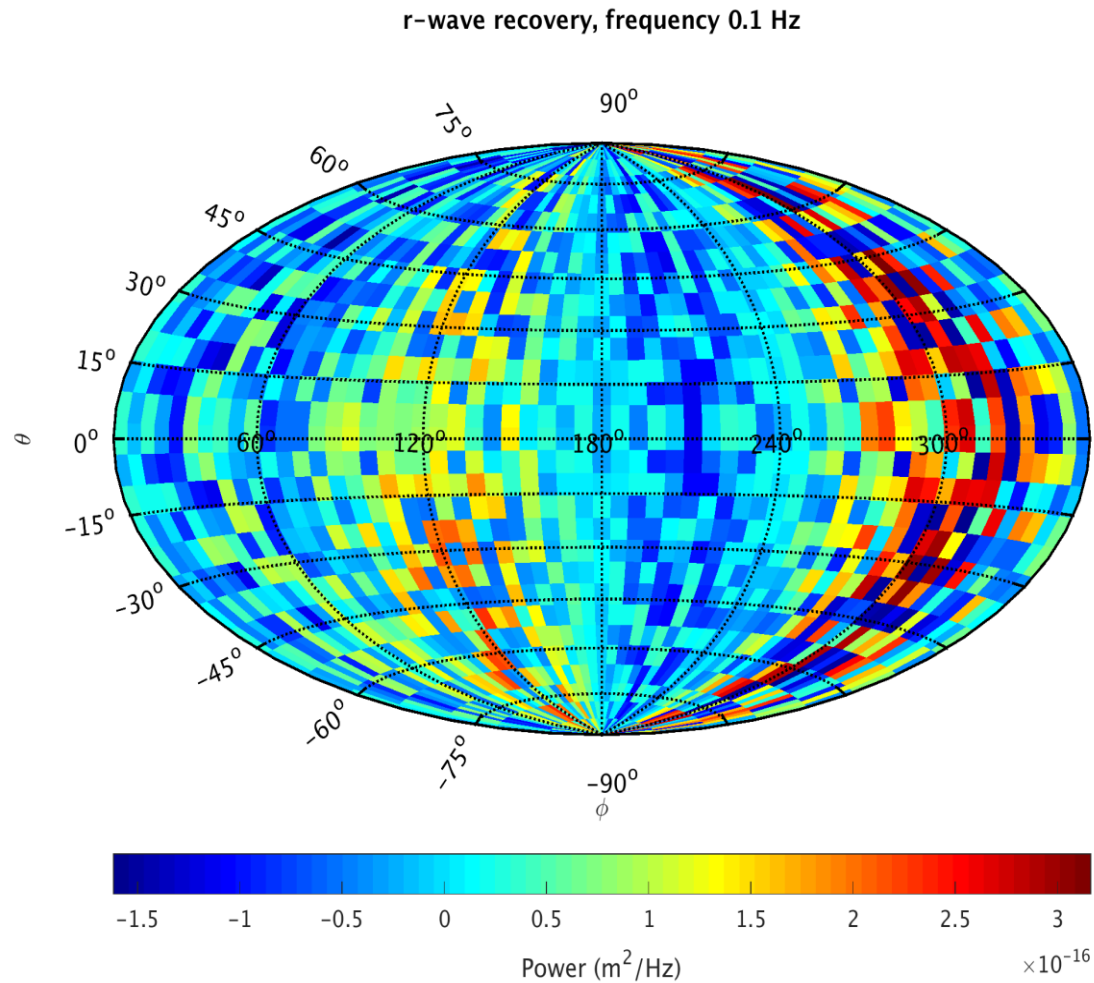
Recovery Frequency (f) [Hz]	Rayleigh Wave Speed (v_R) [m/s]	α [m]
0.1	3,100	15,500
1	1,300	650
3	862	144

Table 1: Values for wave speed were calculated using the relation: $\alpha = \frac{v_R}{2f}$ for what was considered reasonable values for the recovery frequency (f).

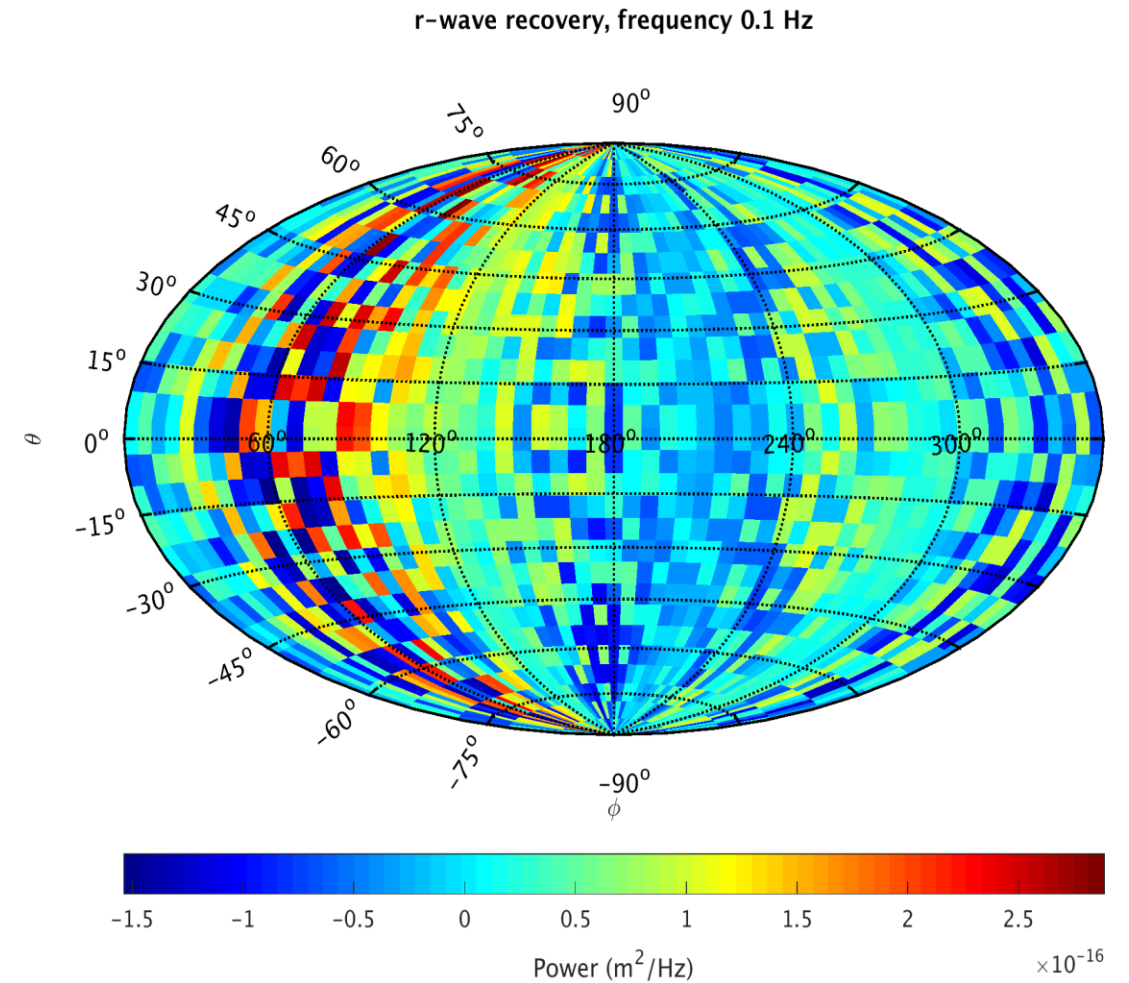
- Observation times were chosen to be centered around GPS time: 1107461150 [s], i.e.
 - Observation length of 100 s: 1107461000 [s] – 1107461100 [s]
 - Observation length of 1/2 day (43,200 s): 1107439550 [s] – 1107482750 [s]
 - Observation length of 1 day (86,400 s): 1107417950 [s] – 1107504350 [s]

Recovery Frequency: 0.1 Hz

Observation length: 100 sec



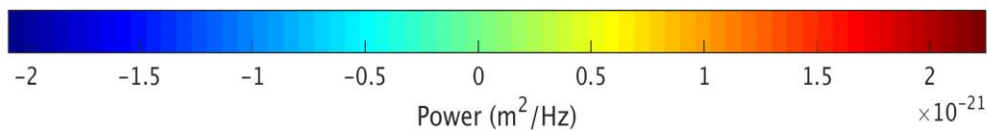
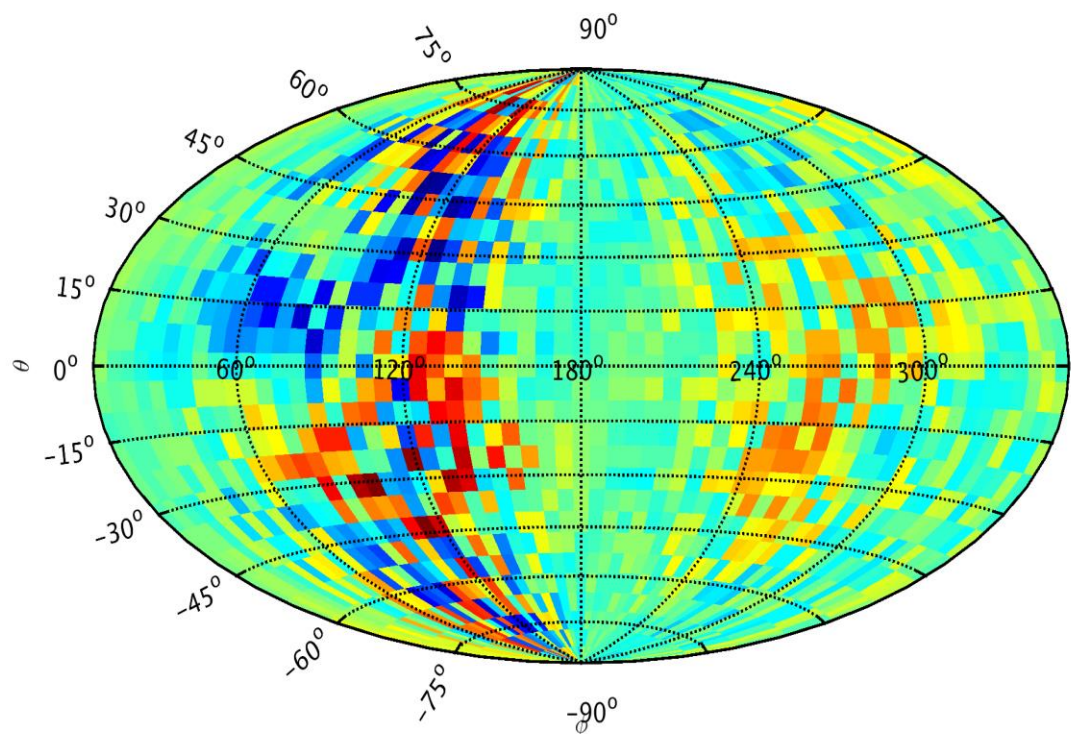
Observation length: 1/2 day



Recovery Frequency: 1 Hz

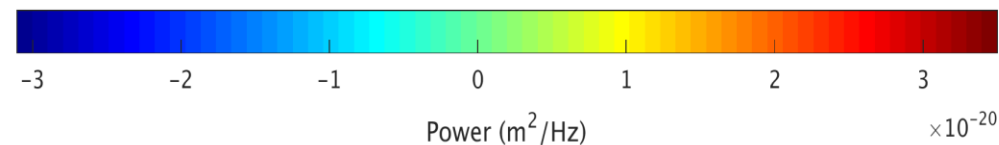
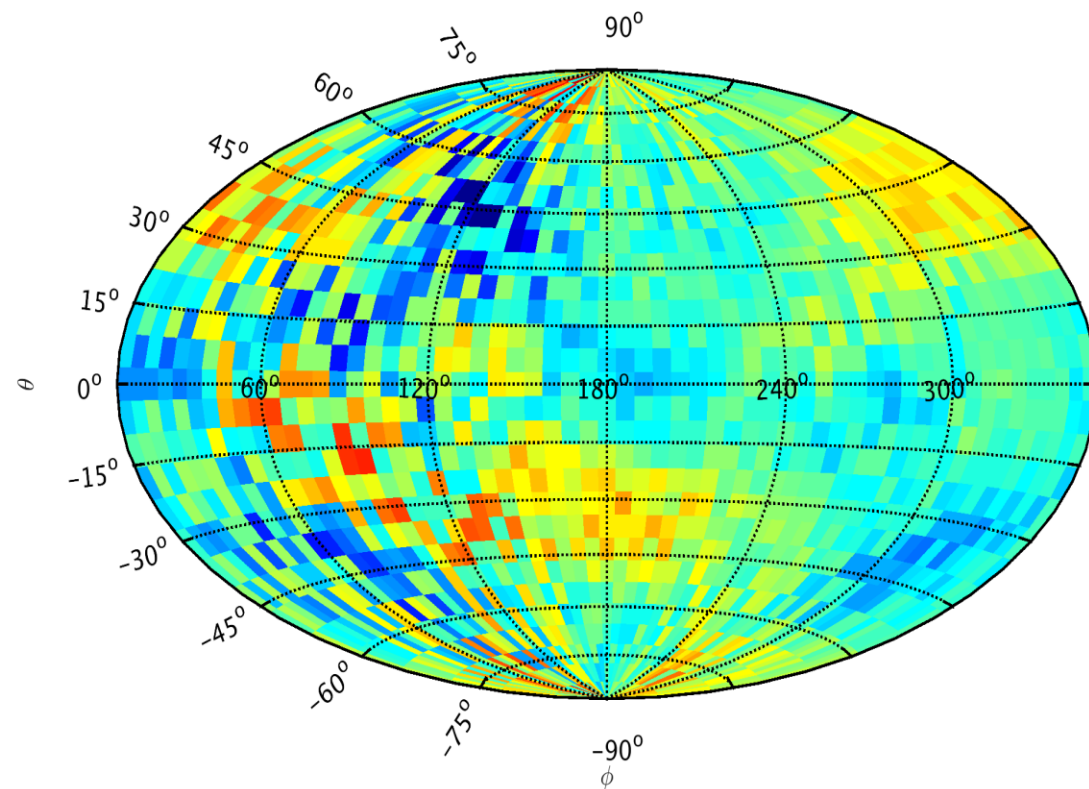
Observation length: 100 sec

r-wave recovery, frequency 1 Hz



Observation length: 1/2 day

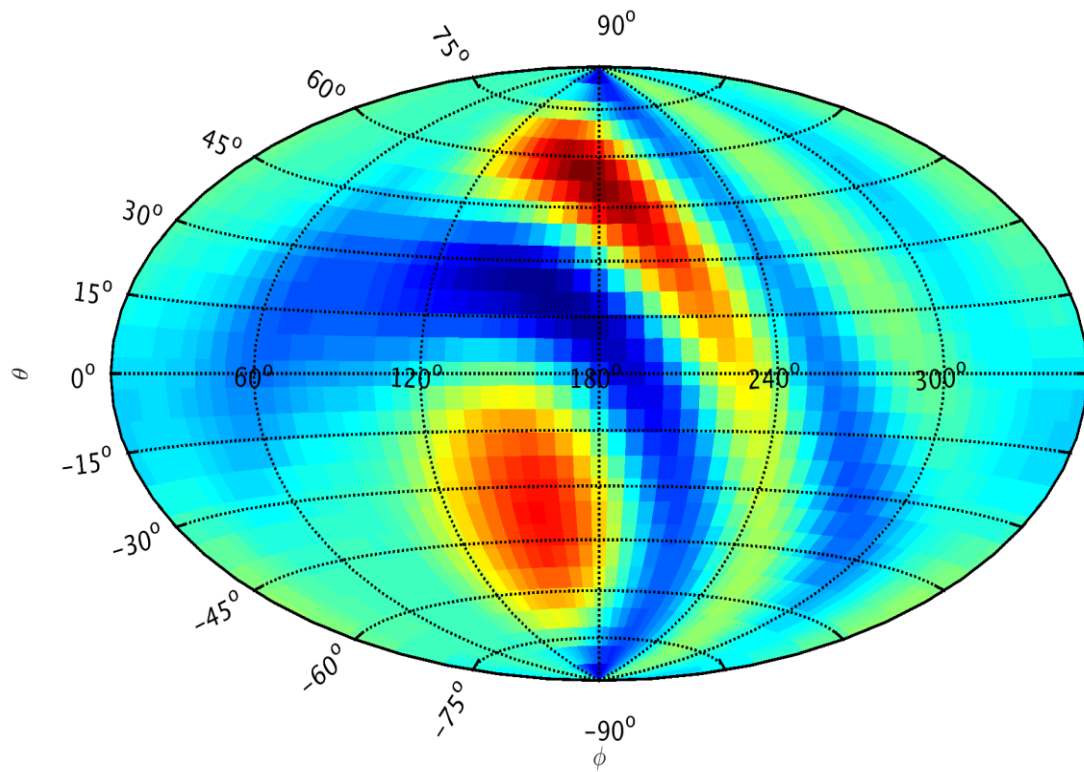
r-wave recovery, frequency 1 Hz



Recovery Frequency: 3 Hz

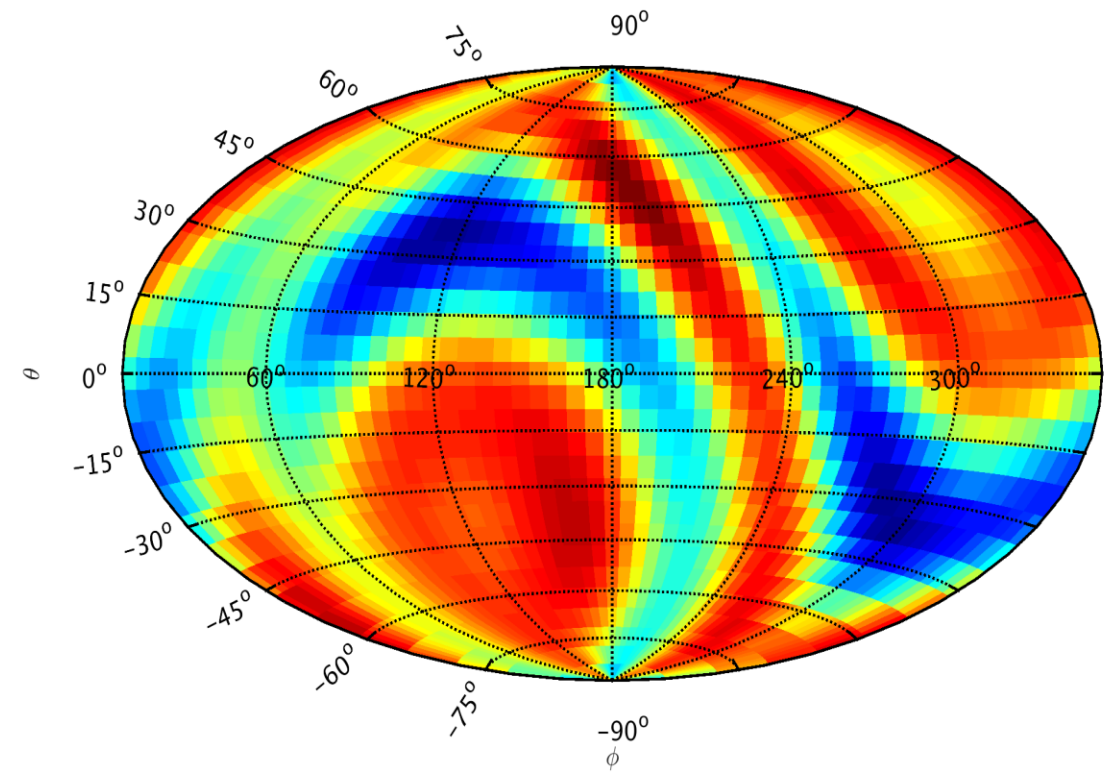
Observation length: 100 sec

r-wave recovery, frequency 3 Hz



Observation length: 1/2 day

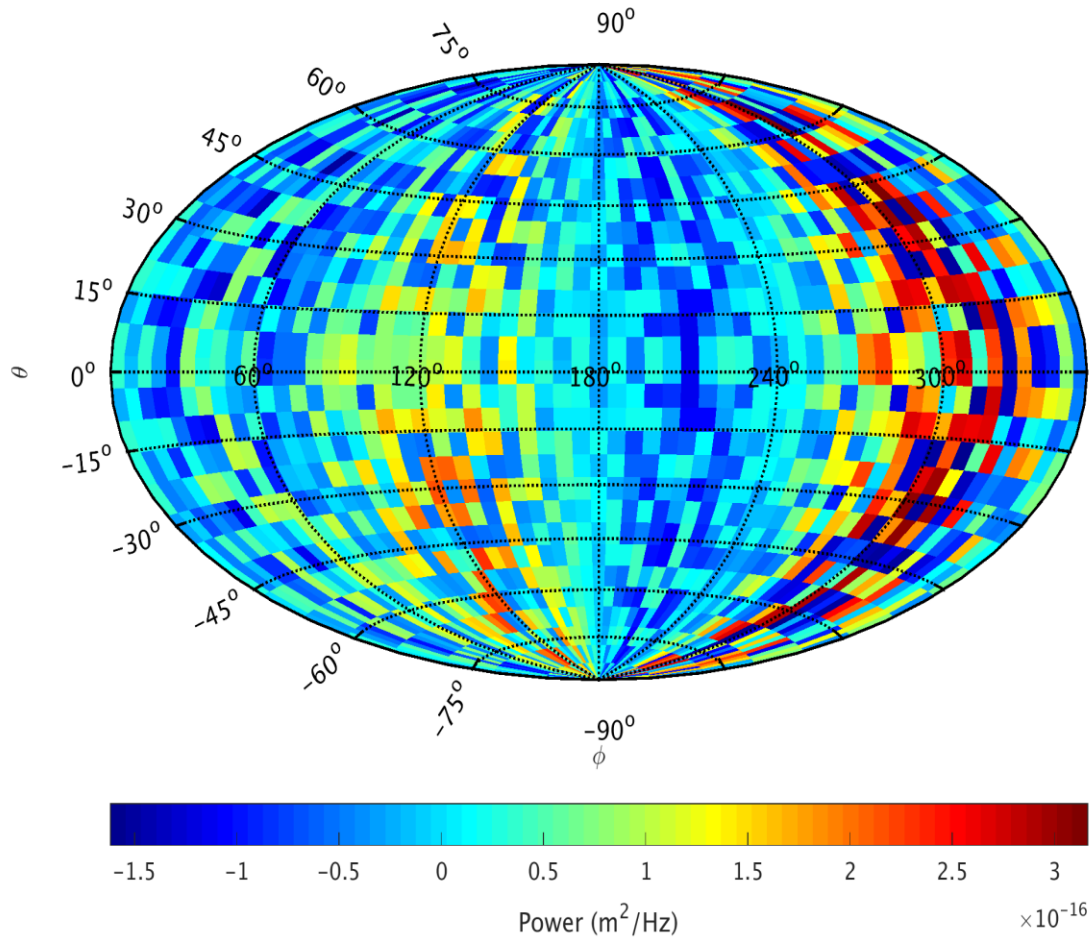
r-wave recovery, frequency 3 Hz



Recovery Frequency: 0.1 Hz

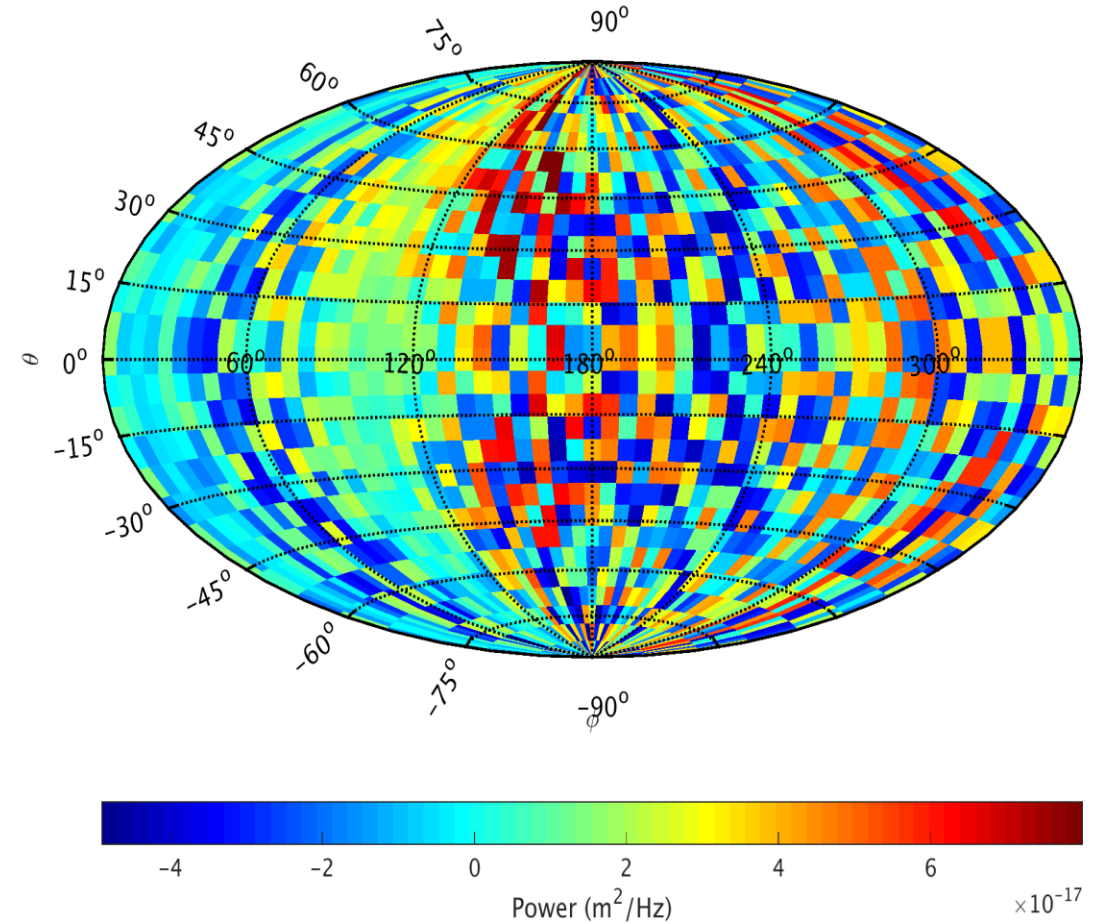
Observation length: 100 sec

r-wave recovery, frequency 0.1 Hz



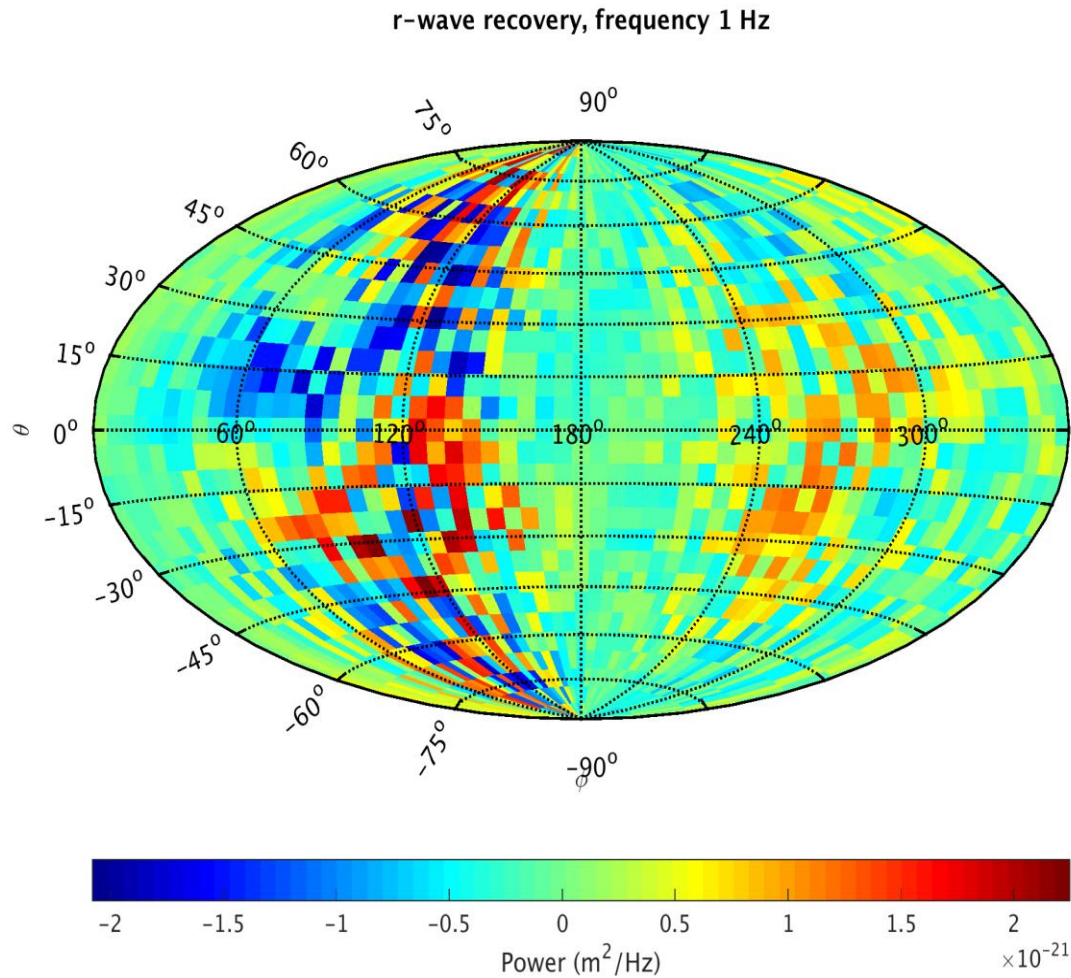
Observation length: 1 day

r-wave recovery, frequency 0.1 Hz

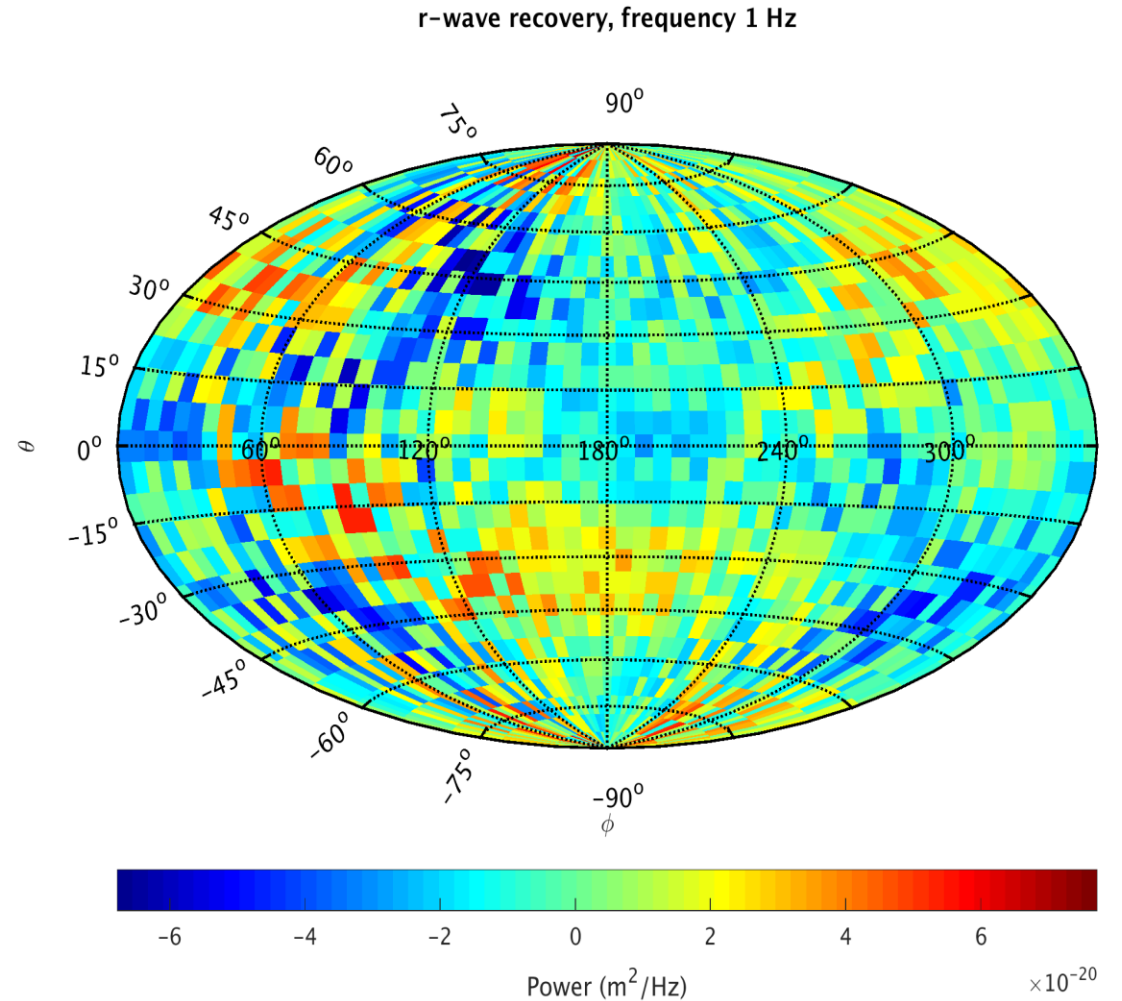


Recovery Frequency: 1 Hz

Observation length: 100 sec



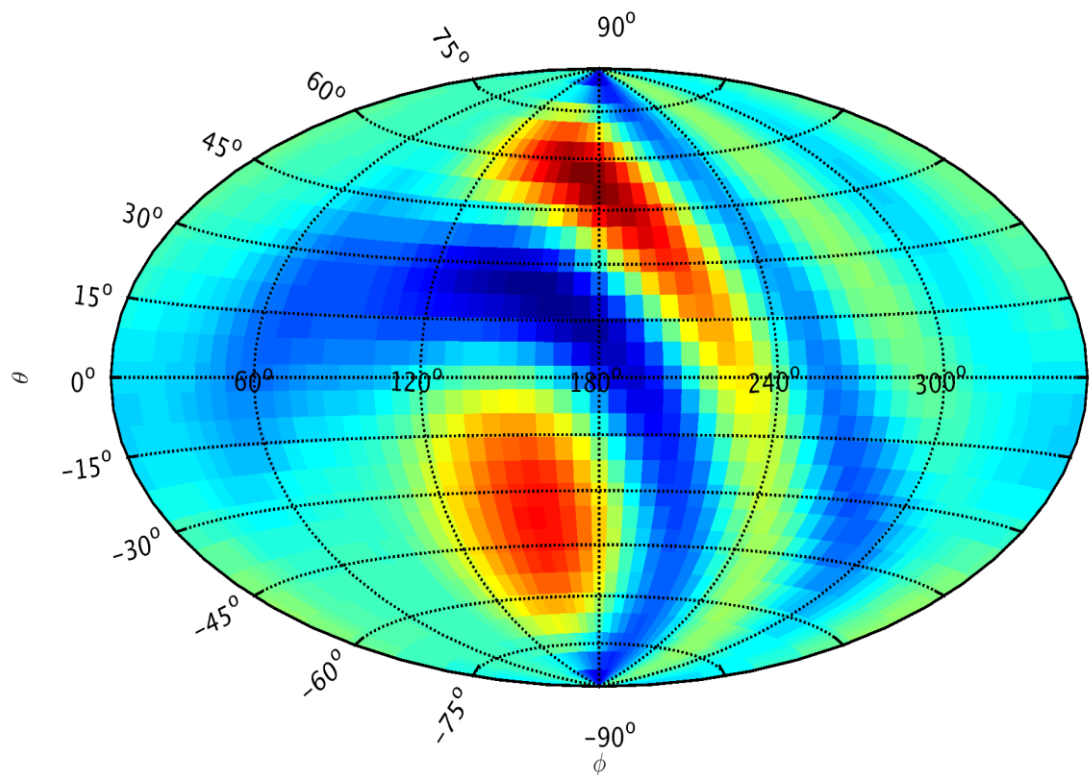
Observation length: 1 day



Recovery Frequency: 3 Hz

Observation length: 100 sec

r-wave recovery, frequency 3 Hz



Observation length: 1 day

r-wave recovery, frequency 3 Hz

