

# Mu2e Leak test update

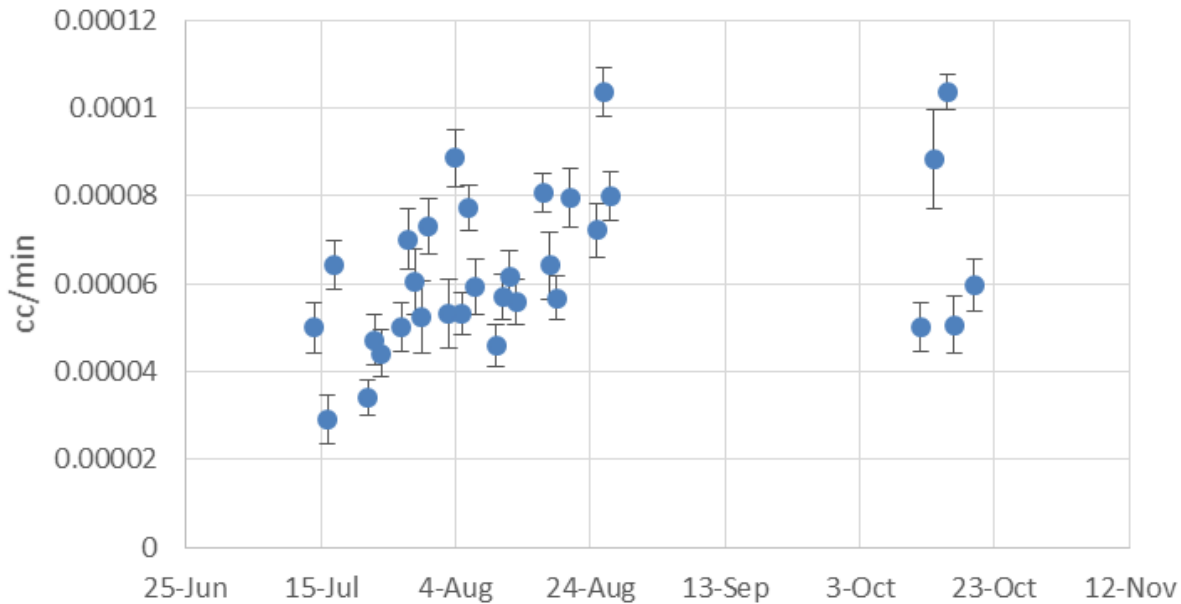
Yan Ke

University of Minnesota

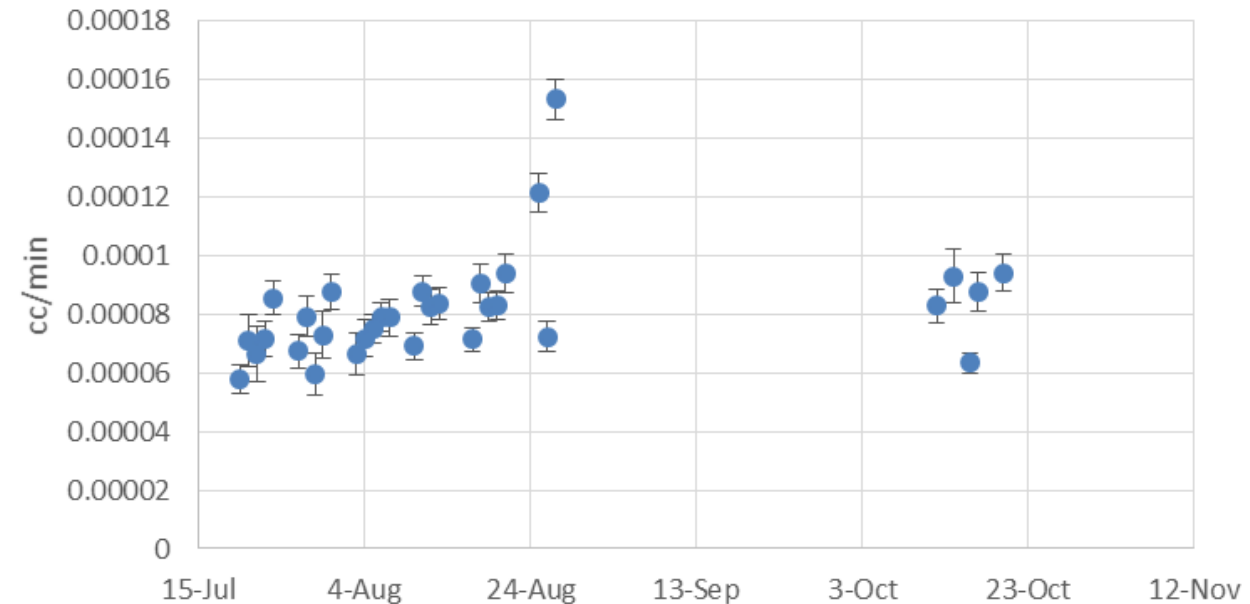
Oct 26<sup>th</sup>

# Consistency test

st00216 (Leak Rate vs. Date)



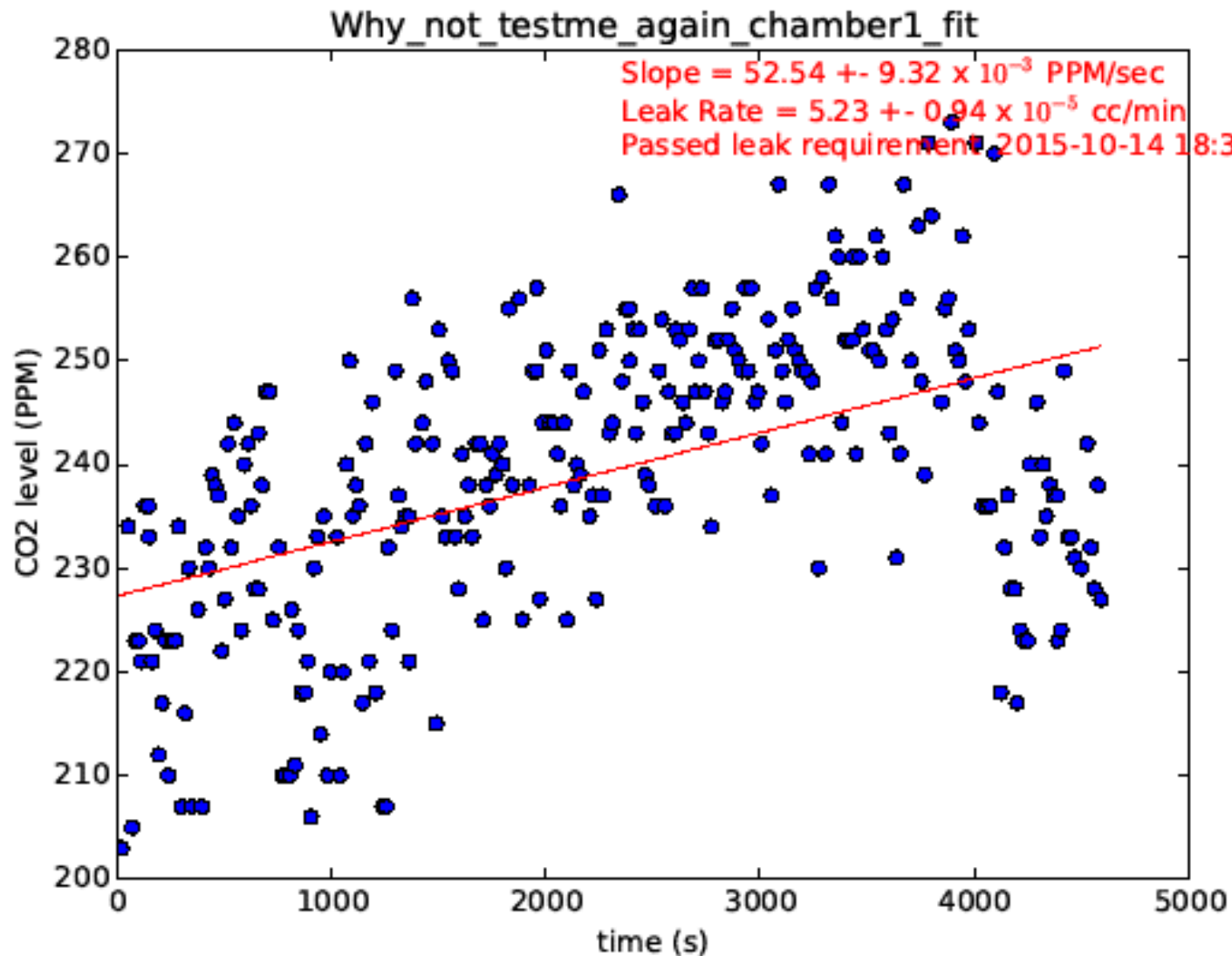
st00215 (Leak Rate vs. Date)



Replaced viton for test before Oct 16<sup>th</sup>. Flush with N<sub>2</sub> after that.

Decide to flush with N<sub>2</sub> for all consistency test in the future

# A “jump” down case



- Leak rate before jump:  
 $8.82 \pm 1.13$  ccm ( $\times 10^{-5}$ )
- Leak rate after jump:  
 $5.23 \pm 0.94$  ccm ( $\times 10^{-5}$ )
- Better to use some way to detect that in python code.

# Shelf deformation test

- 26mm between each floor
- In the middle of the floor is 8mm lower than the end.(Caused by deformation)

